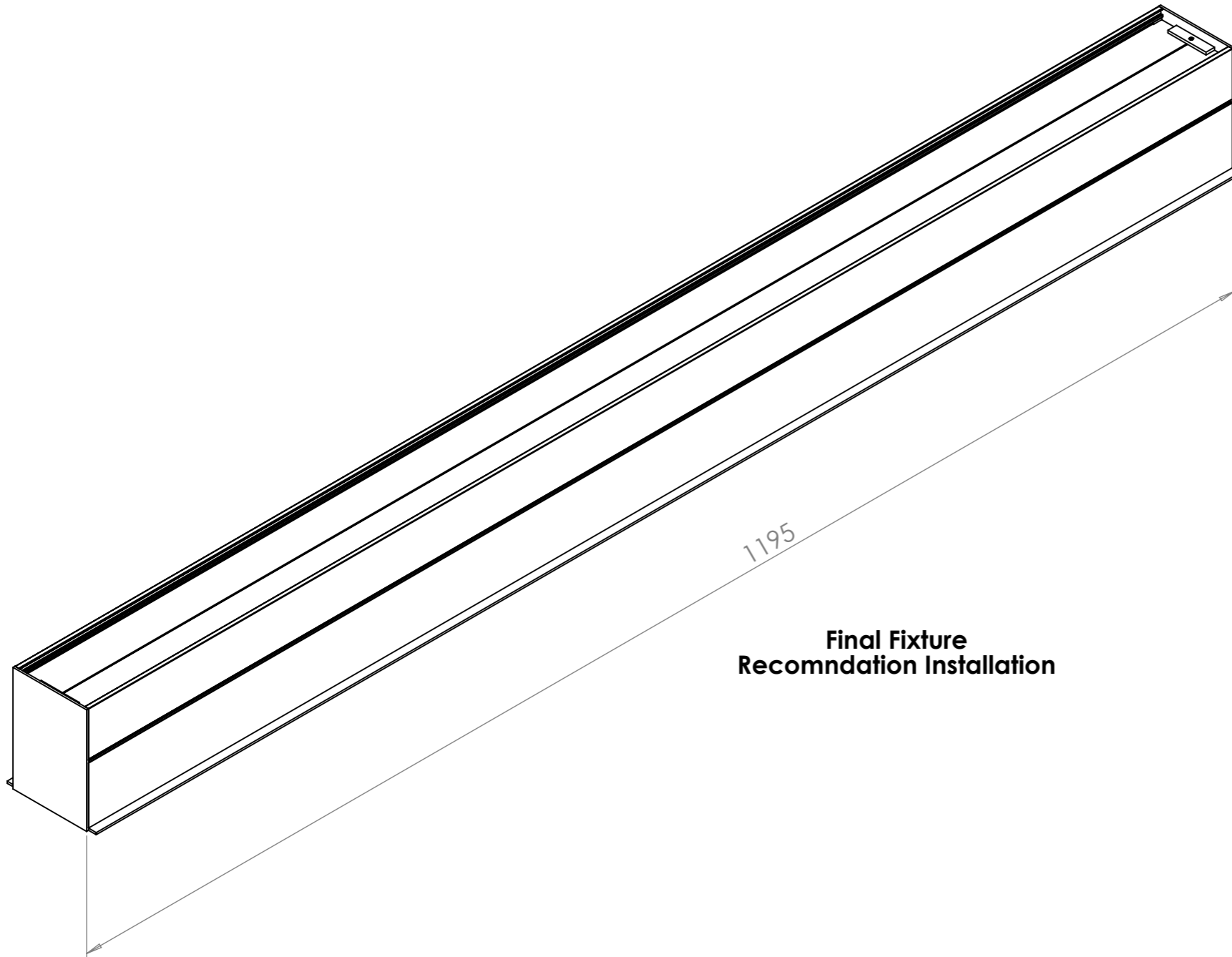
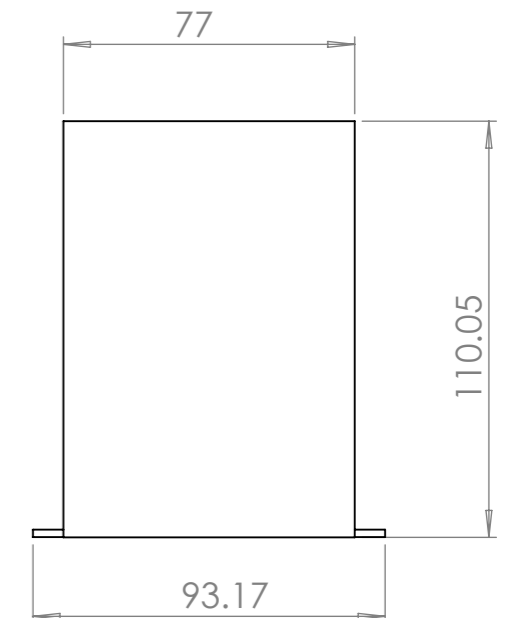


Recomndation :-

- 1) Each Standation Profile upto 2400mm Single Piece Shoud be with two Suspension.
- 2) Joining of Profile upto 2400mm and less should have suspender at the ends and Suspeners at the Eithers at the side of the Joint.



**Final Fixture
Recomndation Installation**



Assembly of Complete Part into a Luminaire

Finished Profile in Bottom Opening:-

1. Remove End Cap Grab Screw
2. Remove End Cap
3. Remove Insert

Our Product Comes in Assembled Format side. This is Just an Pictovial Presentantion of our Profile Assembly.

Grab screw

End Cap
Screwing of end Cap in Required

Disintegration of Luminaire into part for Maintance of Drive & LED :-

1. Drive:-

- Mounting Clamp screw Remove
- Mounting Clamp Remove
- End Cap Grab screw Remove
- End Cap Remove
- Insert Removal From Below
- Acces Driver
- Remove Wire Connection
- Unscrew Driver
- Put New Driver
- Screw New Driver
- Wire Connection Indriver
- Put Insert Back Into Outer Profile
- Finished Cap

2. LED:-

- End Cap Grab screw Remove
- End Cap Remove
- Insert Removal From Below
- Remove Connect Wire From Wago connector
- Unscrew Lens PCB
- Remove PCB
- Add New PCB with heat tap on back side
- Connection Again
- Put Lens PCB Back
- Put Insert into Outer Profile
- Fix End Cap

End Cap

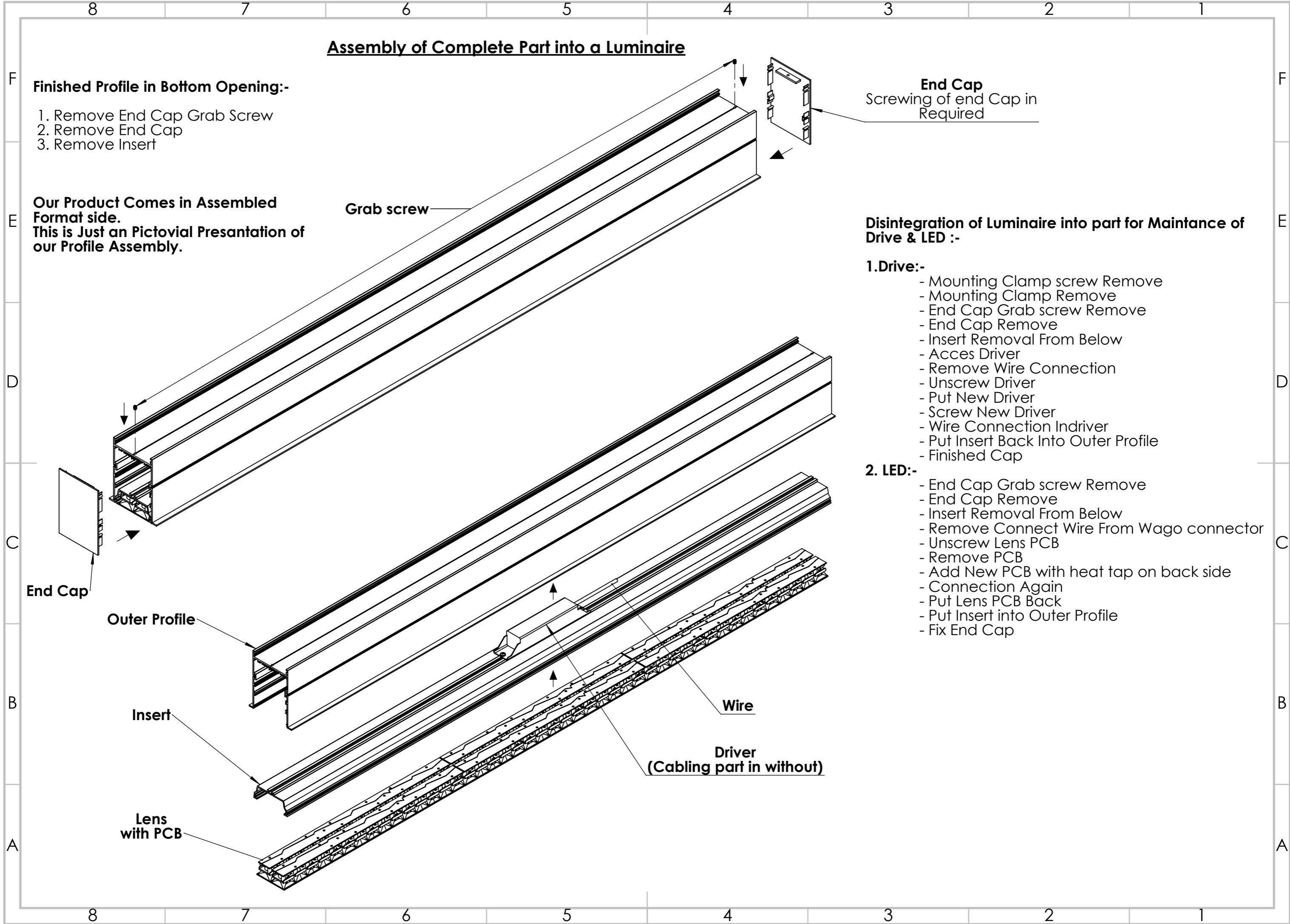
Outer Profile

Insert

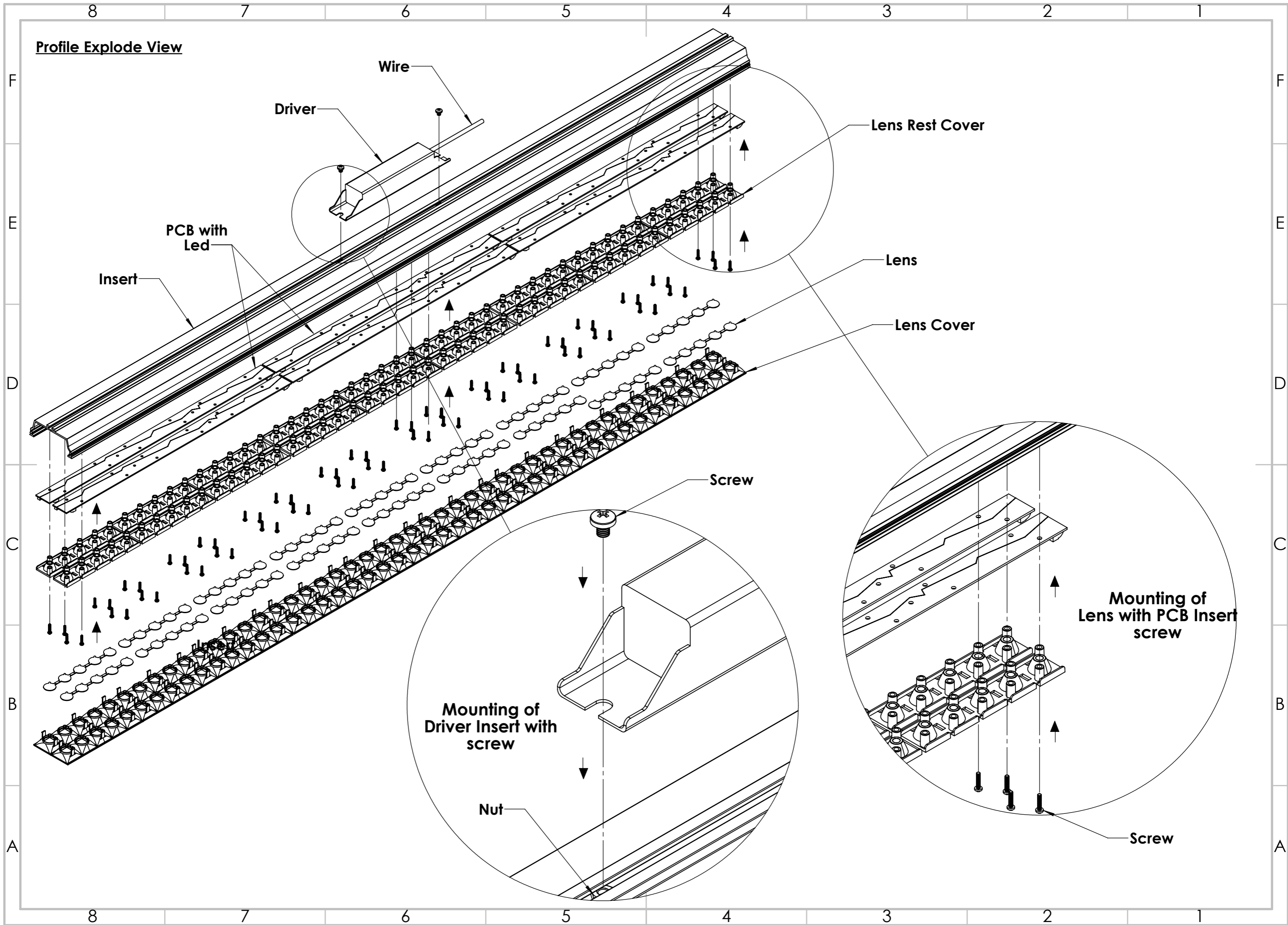
Lens with PCB

Wire

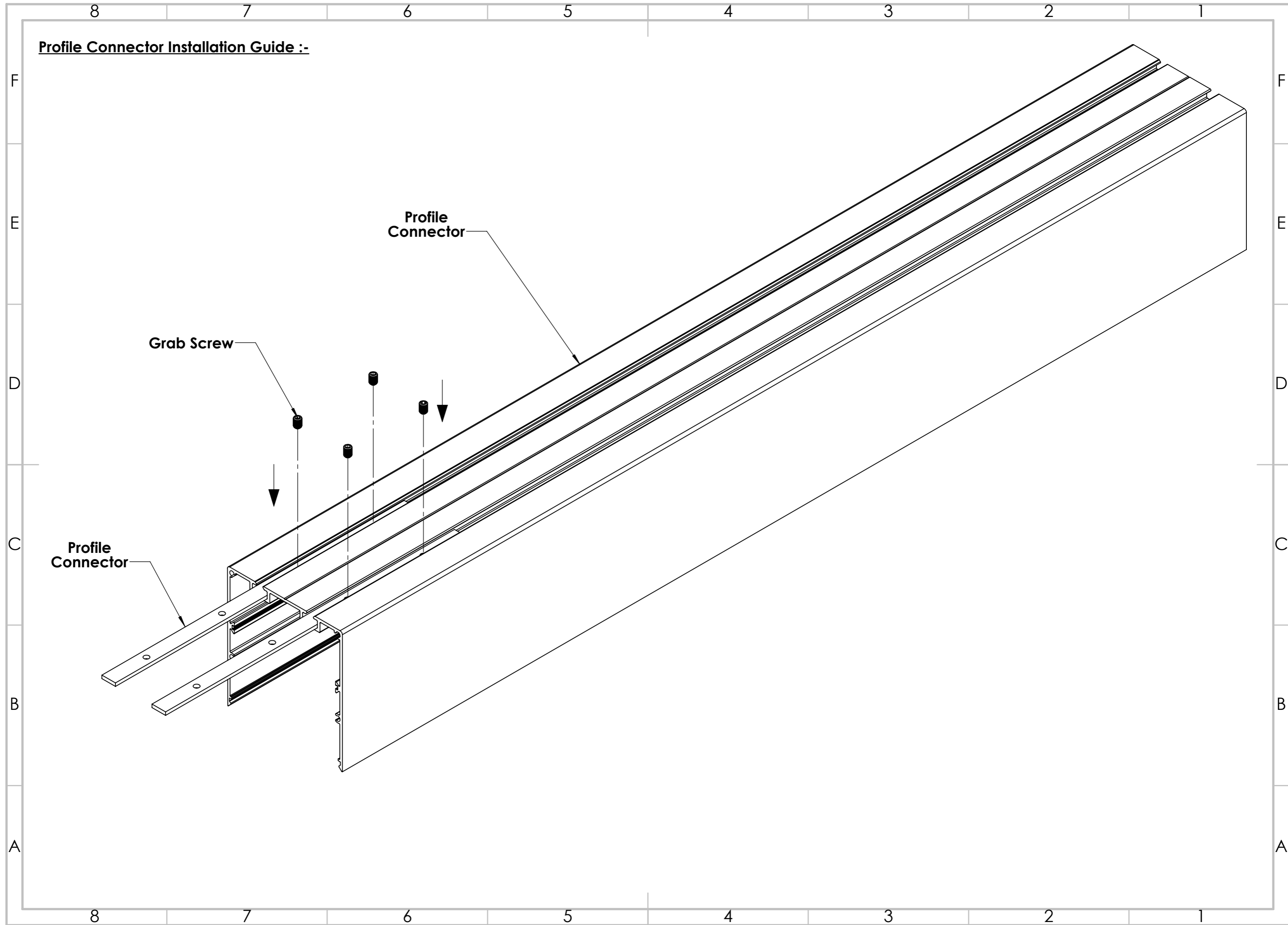
Driver
(Cabling part in without)



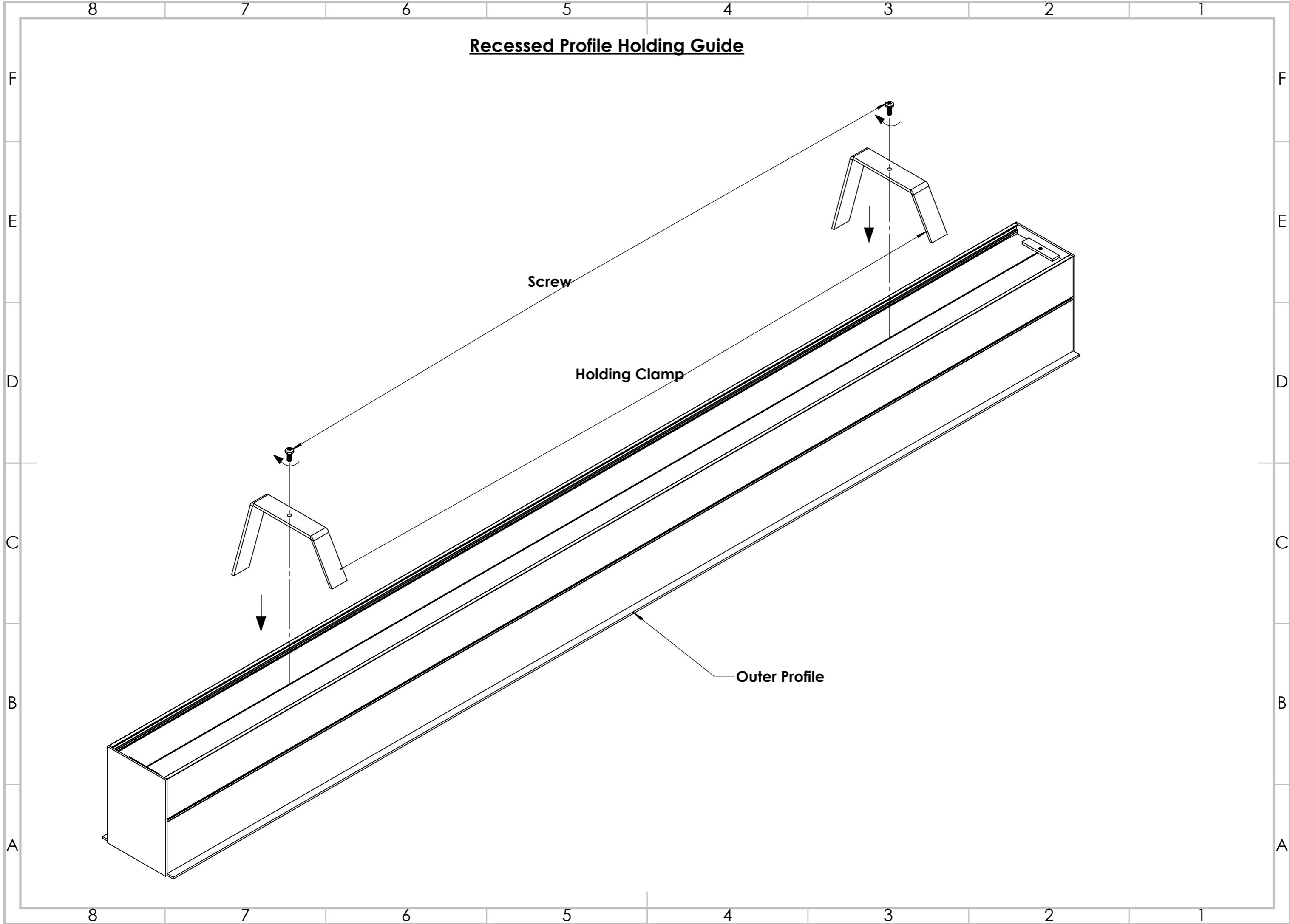
Profile Explode View



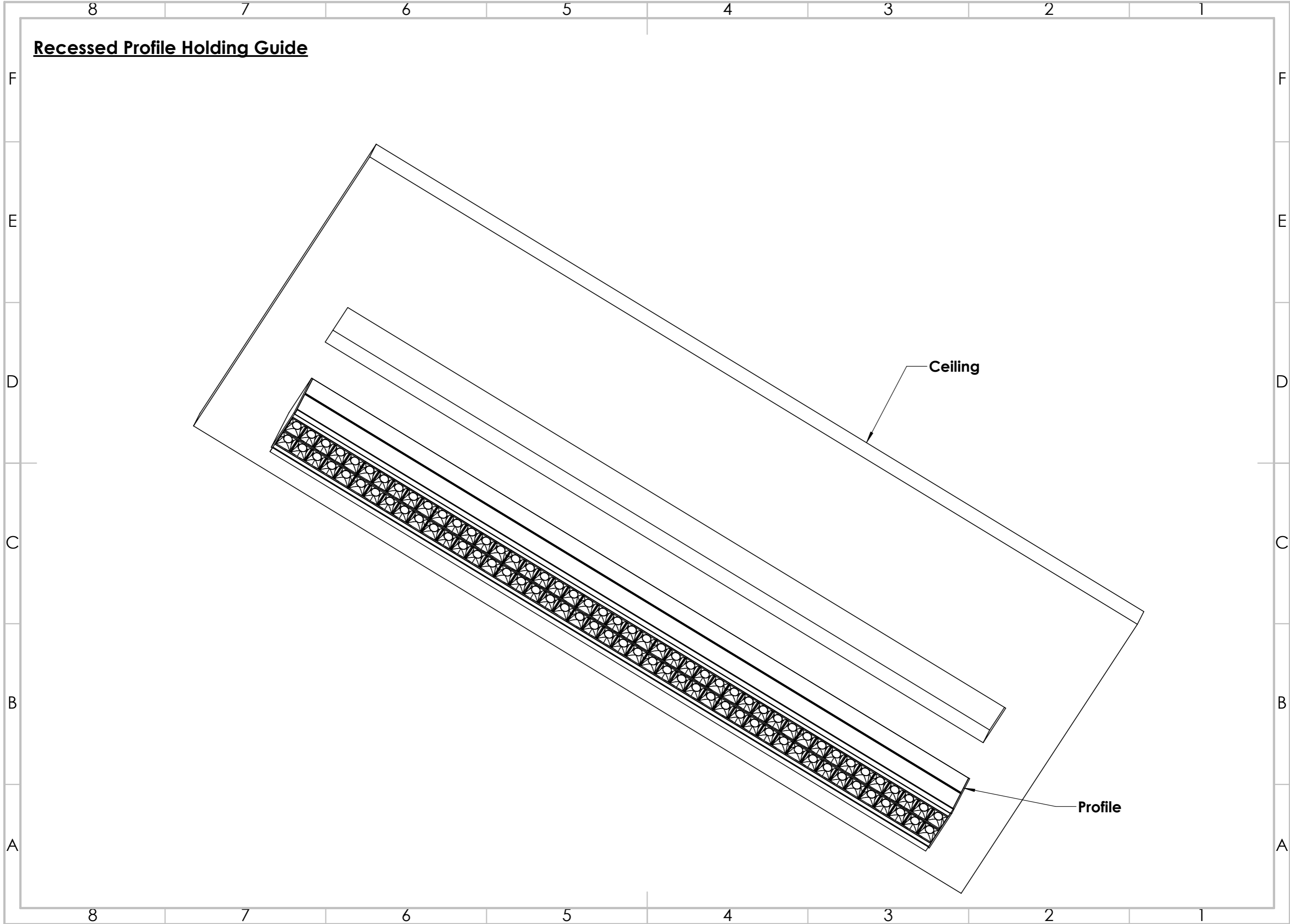
Profile Connector Installation Guide :-



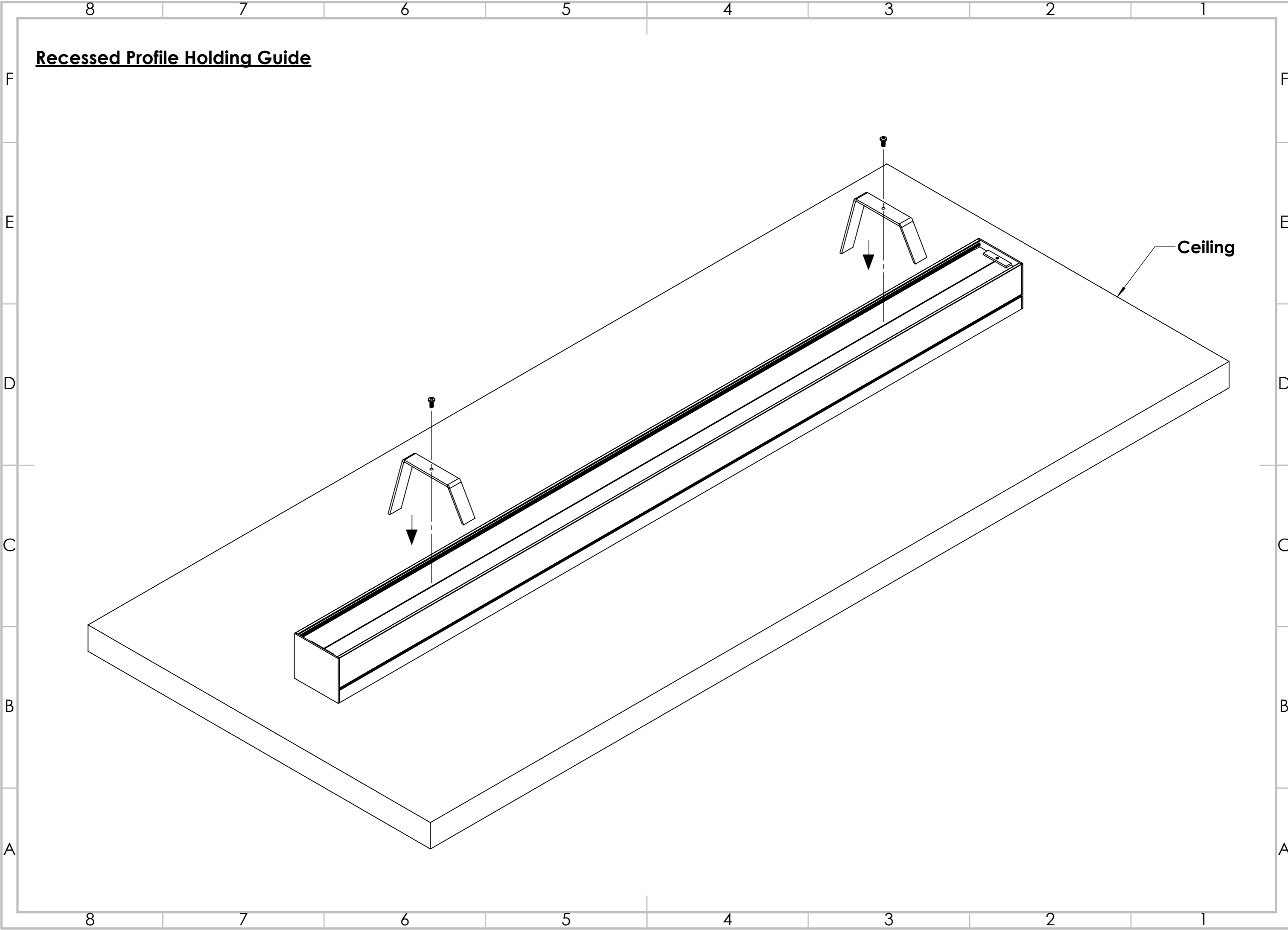
Recessed Profile Holding Guide



Recessed Profile Holding Guide



Recessed Profile Holding Guide



Recessed Profile Holding Guide

